



# MONTHLY MEMBERSHIP PROGRESS REPORT

District 19 A

Results as of: 5/31/2015

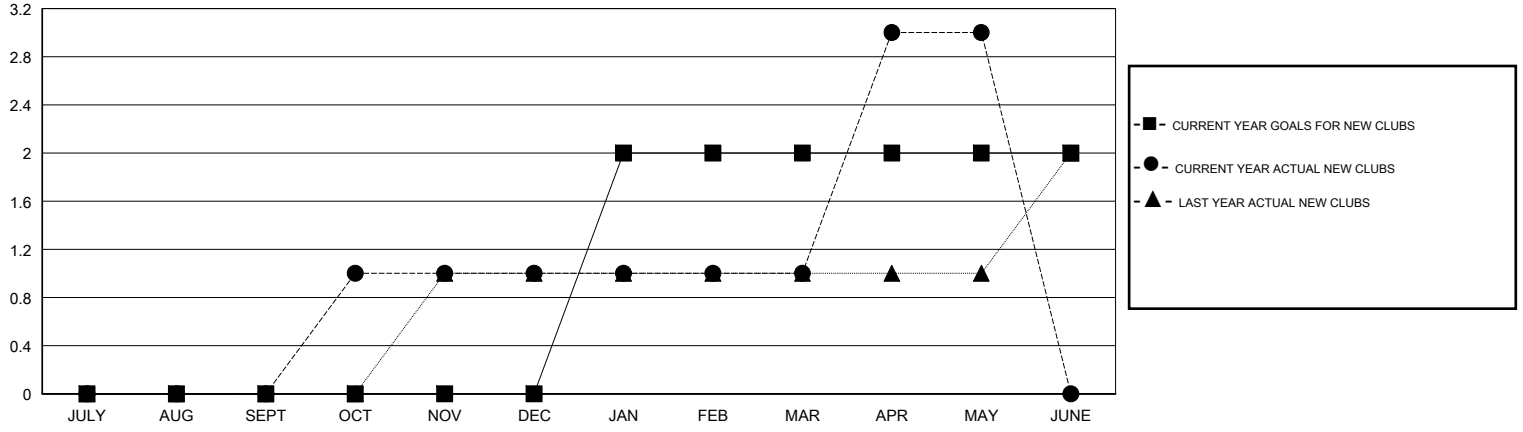
GMT: DENNIS STEVENSON

LOCATION BRITISH COLUMBIA

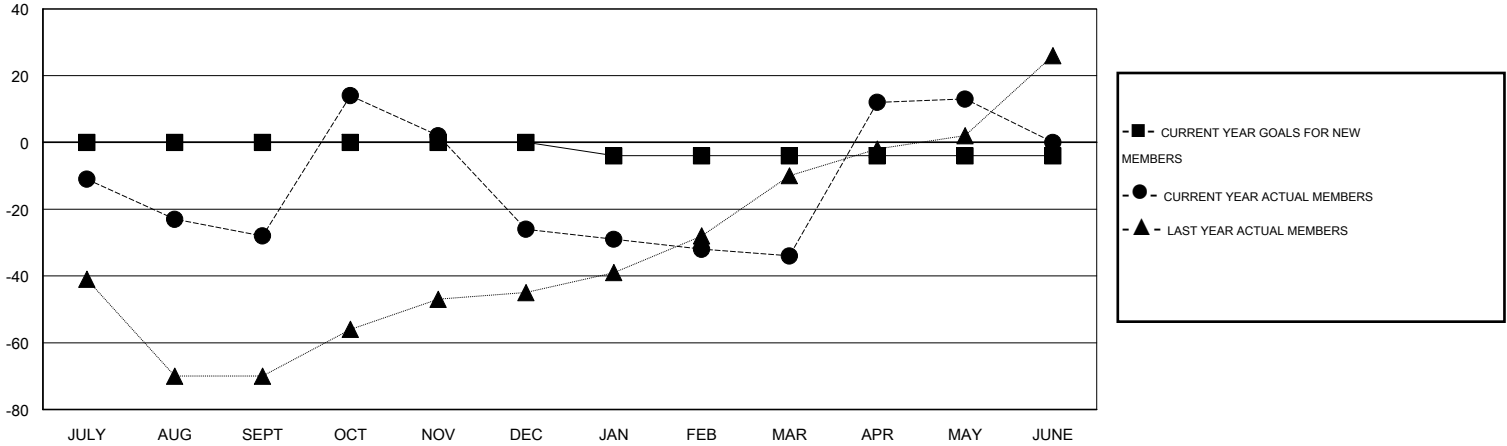
GMT CA 2

Clubs					Members				
RESULTS FOR 2014-2015					RESULTS FOR 2014-2015				
QUARTER	NEW CLUB GOAL	NEW CLUBS	DROPPED CLUBS	NET GAIN/LOSS	QUARTER	NEW MEMBER GOAL	CHARTER AND NEW MEMBERS ADDED	DROPPED MEMBERS	NET GAIN/LOSS
JULY/AUG/SEPT	0	0	0	0	JULY/AUG/SEPT	0	23	51	-28
OCT/NOV/DEC	0	1	0	1	OCT/NOV/DEC	0	73	71	2
JAN/FEB/MAR	2	0	1	-1	JAN/FEB/MAR	-4	19	27	-8
APR/MAY/JUNE	0	2	0	2	APR/MAY/JUNE	0	78	31	47

GOALS AND ACTUAL NEW CLUBS CUMULATIVE



GOALS AND ACTUAL MEMBERS CUMULATIVE



DROPPED CLUBS: 1	38 CLUBS OF 62 ADDED 1 OR MORE NEW MEMBERS	<u>GENDER DISTRIBUTION</u>	
		MALE	687 (58.02%)
		FEMALE	497 (41.98%)
<u>DROPPED MEMBERS</u>		<u>FAMILY UNIT MEMBERS</u> 60	
DECEASED	12	<u>HEAD OF HOUSEHOLD</u> 30	
CLUB CANCELLED	0	<u>NON-HEAD OF HOUSEHOLD</u> 30	
OTHER	168		
<b>TOTAL</b>	<b>180</b>		

[CLICK HERE FOR HEALTH ASSESSMENT DATA](#)